

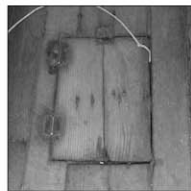
# The Mast General Store Scavenger Hunt

General Stores were once very common all across the United States. They were the social center of the community in addition to being a place where goods could be purchased or bartered for. Many of the items in the Mast General Store Scavenger Hunt were also found in other general stores. See how many you can find and how long it takes you to find them.

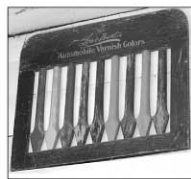
**Find the pot-bellied stove.** This is the social center of the store - Tall tales and local politics are common topics of discussion.



**Find the chicken hatch.** Hint: Look in the floor beside the door near the coffee pot. Mr. Mast stored his bartered fowl for safekeeping in a coop beneath the store.



**Find a display selling automobile varnish.** Hint: Look up near the front of the store. You could add color to the wheel spokes on your car yourself earlier this century.



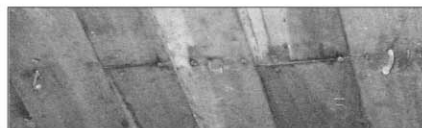
**Find the safe.** This safe was once used the Mast Store for keeping change and important papers.



**Find a coffin.** Hint: Look upstairs. This is an example of coffins that were once kept in stock at the Mast Store to take care of our neighbors' last needs.



**Find crooked nails in the ceiling.** Hint: Look upstairs. These nails once held country hams being cured for local sale as well as shipments to far away places. If you look on the floor under some of these nails, you'll see drippings from the hams.



**Find the Post Office.** Mail arrives daily. The Mast Store is paid \$1 annually to operate the community's post office.



**Find something that you might have used to light your home with in the 1800s and early 1900s.**



**Find a license plat used to cover a hole in the floor.** Sometimes you patch a hole with just whatever you can find.



**Find a bag of feed.** General Stores carry what's needed for people and animal neighbors.



**Find an advertisement for Crazy Water Crystals.** Hint: Look up. This is probably one of the first "health" drinks.



**Find an old-fashioned toy.** Powered by your imagination, toys like these have entertained generations.

**Find the Middle Room expansion line.** Hint: Look on the ceiling and on the floor - it's at the top of the "hill" in the floor. This is the oldest room in the store. The store was added onto by expanding forward about 20 feet.